

The No.1  
best selling portable  
fibre range!

ARMOURLUX  
**500**  
incorporating  
**LCMAX**



**ARMOURLUX**  
COMMUNICATE PROTECT DELIVER

## ArmourLux500

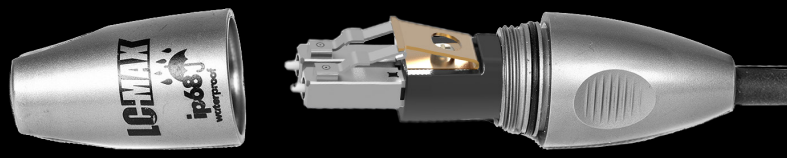
### The right solution

**ArmourLux500** meets the demands of mobile fibre optic communication, for media, audio, security, data and more. Despite the variety of uses the requirements are often similar - a re-usable fibre cable that is easy to deploy, retrieve, connect, transport and store, over and over again. **ArmourLux500** addresses all of these needs.



### So what's unique about ArmourLux500 LCMAX?

Offering an enhancement to the standard LC connector, the all-metal LC-MAX has been designed specifically for use with Tactical deployable fibre, where high cable retention and durability are important. The all-metal connector body and latch provide a secure, dependable connection and the IP68 protective metal shell prevents water and dust ingress, whilst it's streamline design ensures a snag-free deployment and retrieval. The LC-MAX is 100% compatible with standard LC sockets, connecting to your equipment without the need for an adapter cable or bulkhead. The Military inspired Tactical fibre manufactured by Belden is durable and suited to repeated retrieval and deployment.



### Buy with Confidence

All ArmourLux assemblies are made in the UK. We're also an ISO9001, ISO14001 certified company, where quality and customer service are our highest priorities. With over 30 years experience as a trusted provider of fibre optic cables, you can be reassured we understand the requirements of mobile fibre optic communications.



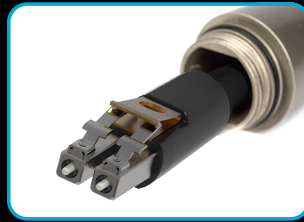
Certificate Number 15035



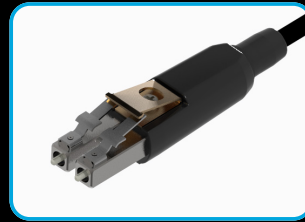
0000

## The **LCMAX** Connector

The LC-MAX is 100% compatible with standard LC sockets, connecting to your equipment without the need for an adapter cable or bulkhead.



100% compatible LC



Highest quality engineering



IP68 Cap & Tether

## Capacity per Reel (m)

Number of Fibres	2	4	8	12	24	
Cable Diameter	5.4mm	5.8mm	6.4mm	7.3mm	8.5mm	
REEL OPTION	R1	76m	67m	49m	36m	33m
	R2	141m	123m	90m	66m	61m
	R3	277m	241m	177m	129m	120m
	R9	447m	390m	286m	209m	194m
	R10	710m	618m	454m	331m	308m
	R6	906m	847m	622m	453m	422m
	R7	1359m	1270m	933m	680m	633m

## Cable Comparison

Number of Fibres	2	4	8	12	24	
Cable Diameter	5.4mm	5.8mm	6.4mm	7.3mm	8.5mm	
SPECIFICATION	Weight/km	26kg	30kg	37kg	45kg	55kg
	Tensile Strength Short Term	300N	400N		450N	
	Operating Temperature	-55°C to +85°C				
	Crush Long/Short Term	3000N/m / 5000N/m (IEC 60994-2-20)				

## Features

- Rugged metal bodied LC connector
- All-metal, snag-free protective shell
- Mates directly with standard LC socket
- IP68 protected from dust and water
- Quality Belden Tactical fibre cable
- Excellent cable retention
- 2-24 core, bend insensitive fibre
- Available in both multi and single mode
- Compact, portable cable reels
- Lightweight and easy to carry
- Manufactured in the UK
- Aftersales refurbish and repair service

To see our other range ArmourLux cable ranges, to request an ArmourLux sample or for more information, please call: **01488 685 800** or email: [info@armourlux.com](mailto:info@armourlux.com)



ArmourLux is a brand of Universal Networks UK Limited  
 Charnham Lane, Hungerford, Berkshire RG17 0EY.  
 T: +44 (0) 1488 685800 | F: +44 (0) 1488 685899 | [www.armourlux.com](http://www.armourlux.com)

